

Regione Siciliana
 COMUNE DI RAMACCA
 Prov. Di Catania

OGGETTO: Progetto ESECUTIVO di un asilo nido Comunale da realizzare attraverso la ristrutturazione di un edificio esistente all'interno dell'istituto comprensivo G.Verga piano terra plesso " D " ai sensi QSN 2007-2013 E dell'art.1 commi1250,1259,1260 e 1261 legge 296/2006.

STAFF DI PROGETTAZIONE:
 Geom. Antonio Giglio
 Ing. Giuseppe Verde
 Geol. Salvatore Dicuzzo Liotto
 Ing. Vincenzo Giglio
 Ing. Salvatore Corsoli

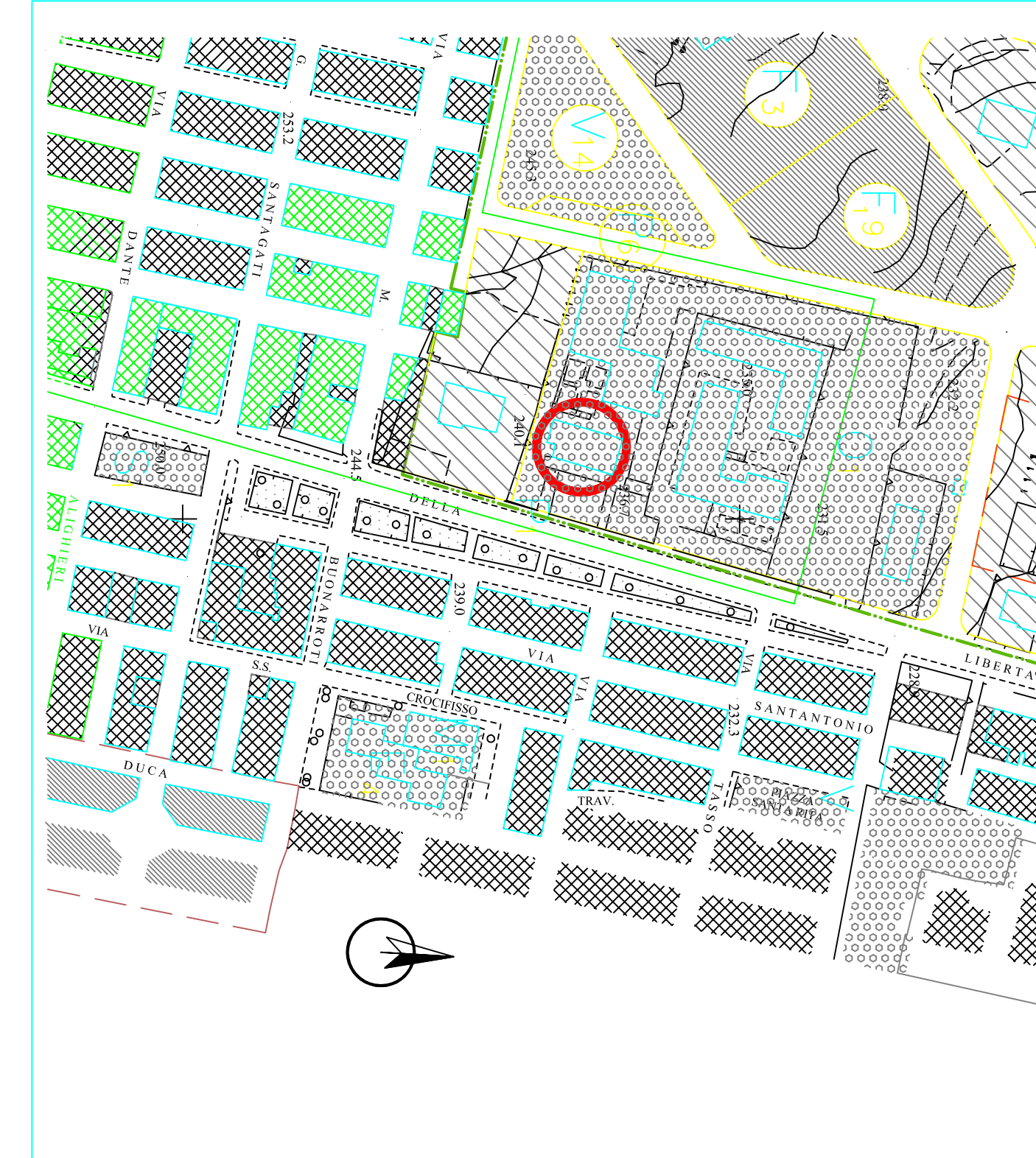
Tav. 9-a Grafici Illustrativi scala 1:100



Ramacca li _____ Il Progettista

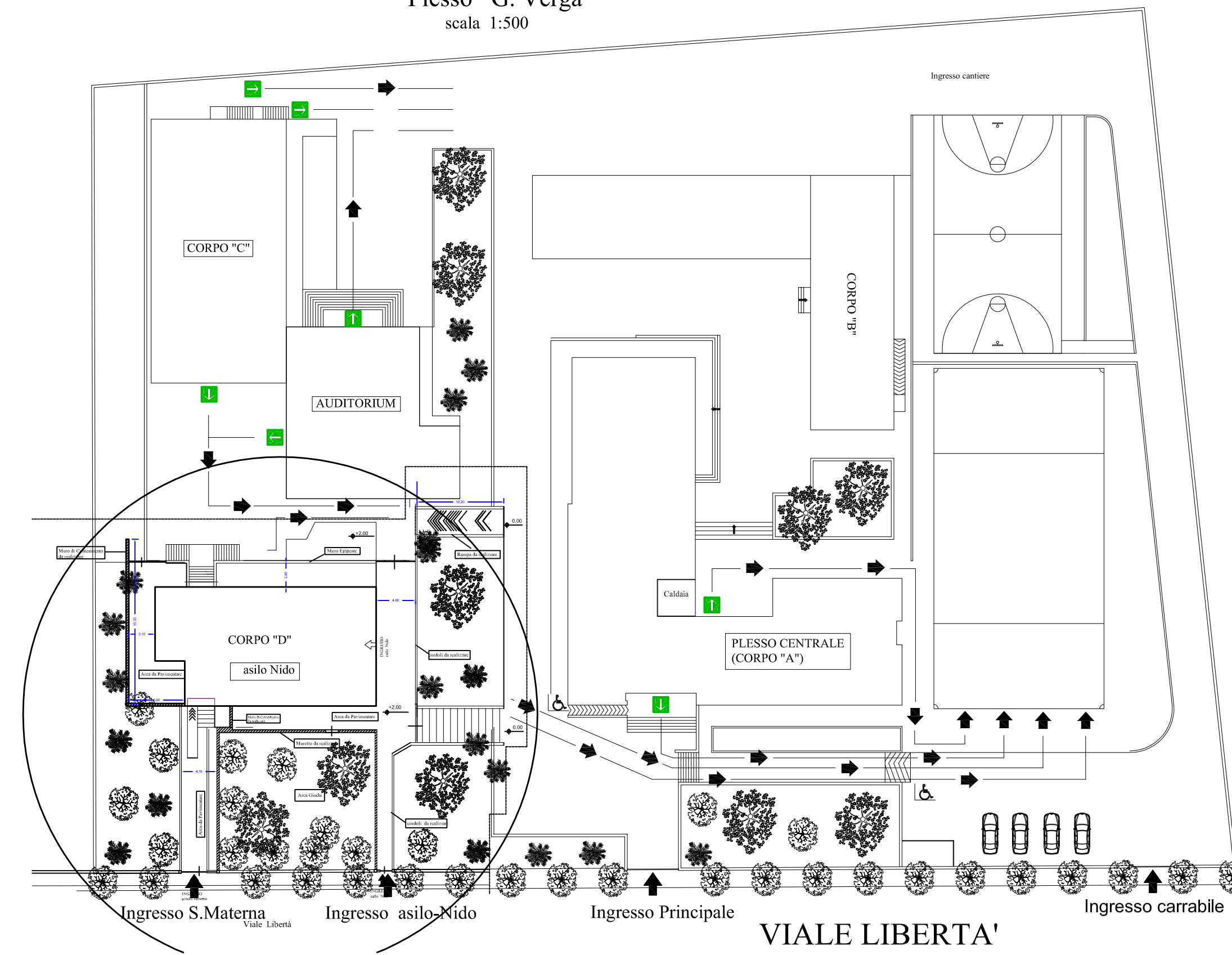
Il R.U.P.

STRALCIO DI P.R.G.
 scala 1:2000

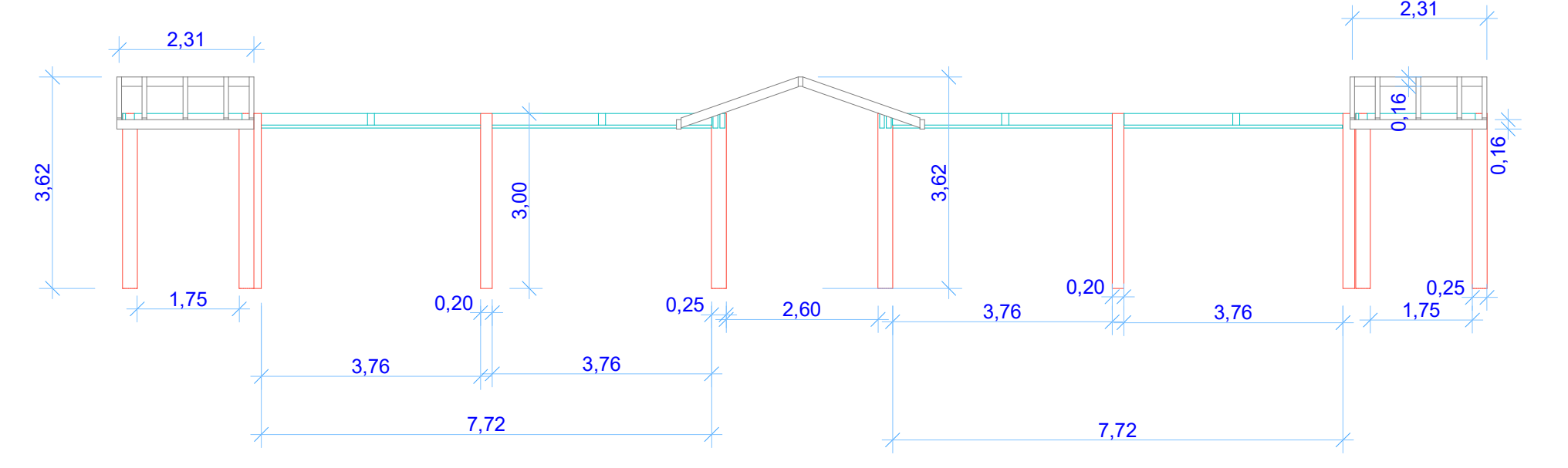
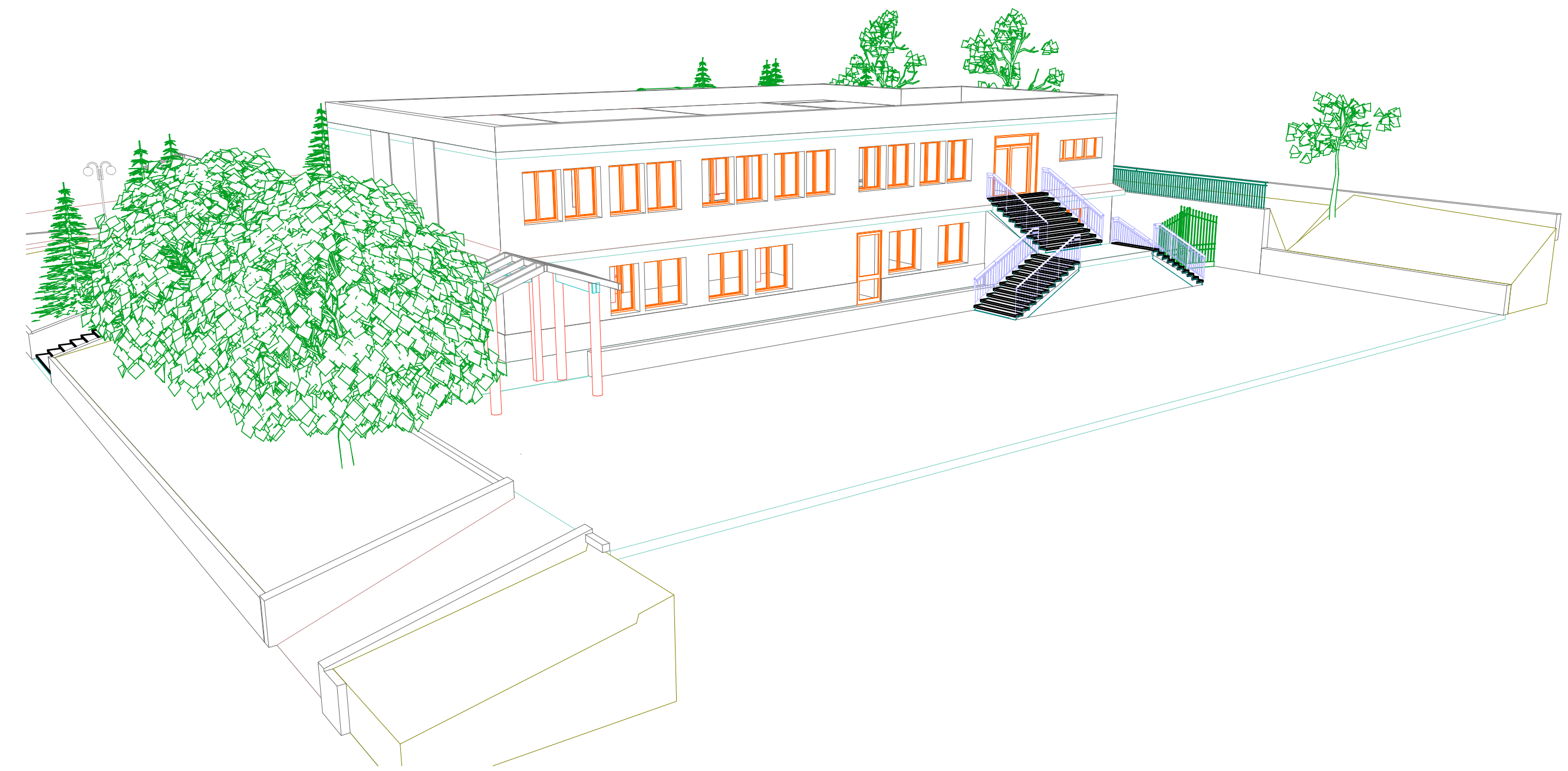
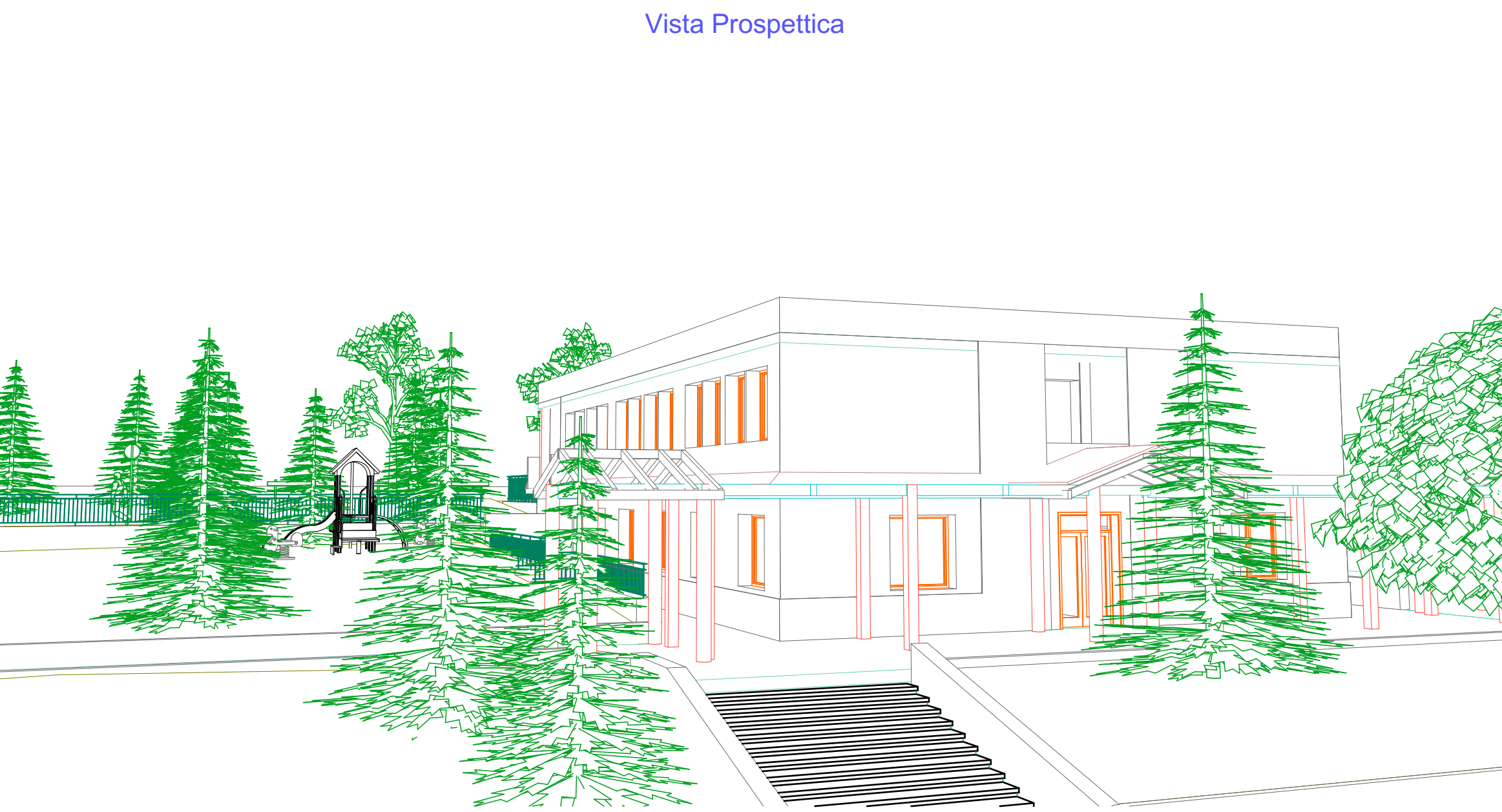
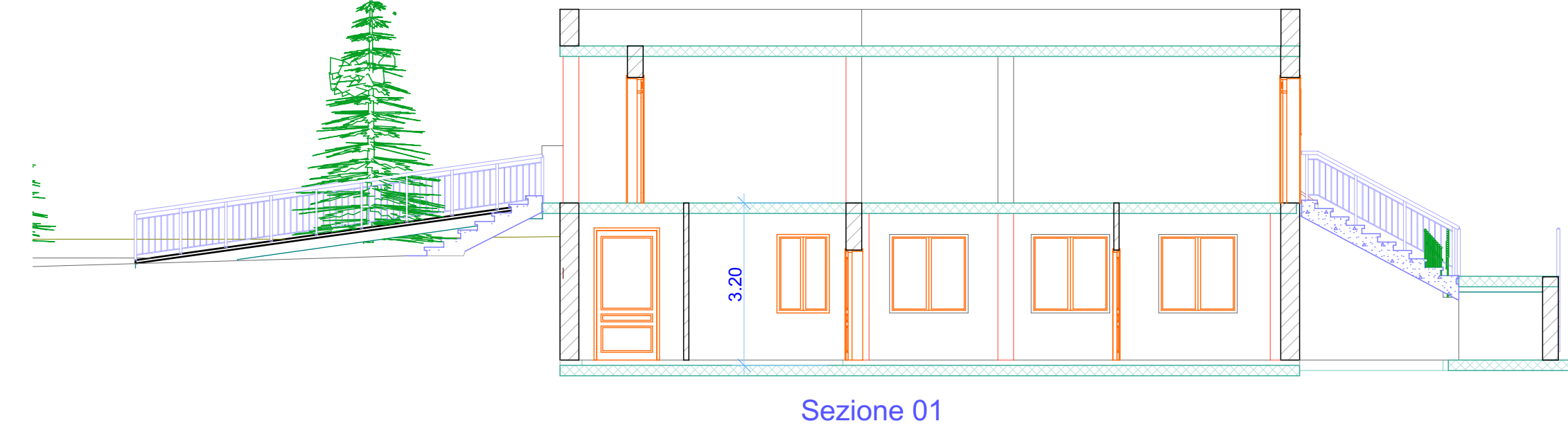
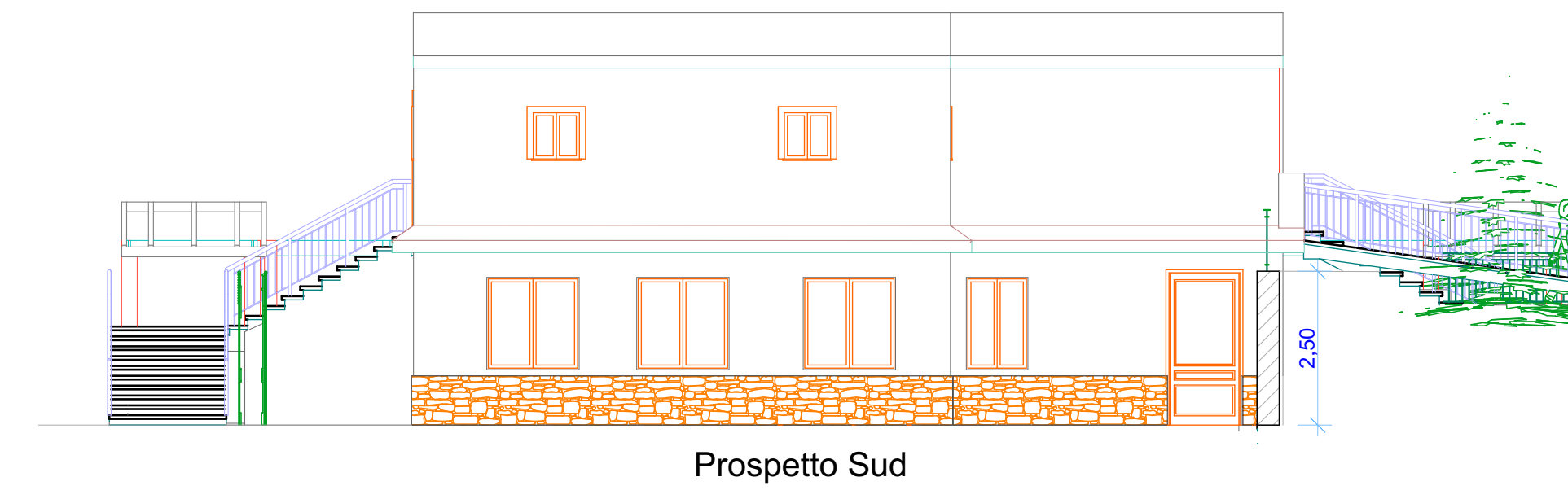
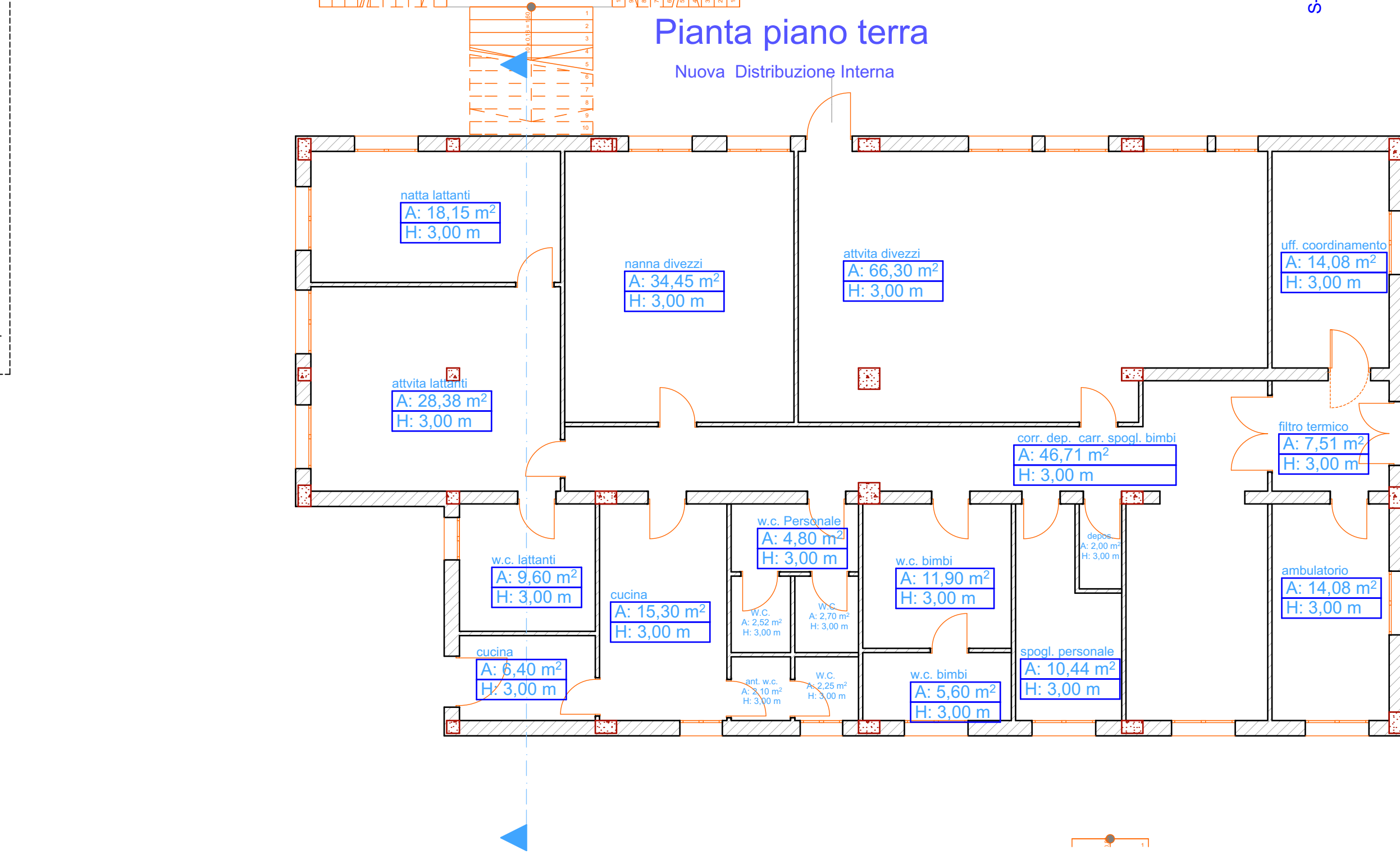
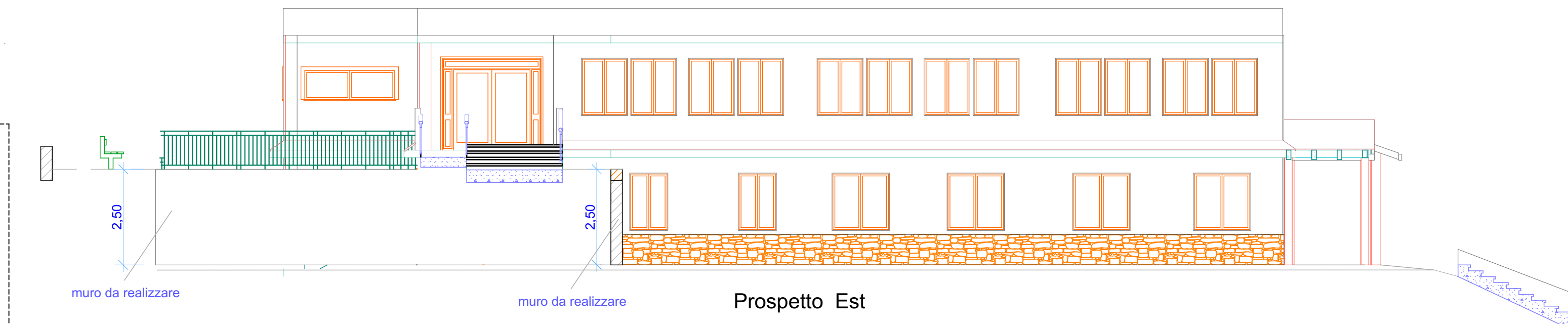
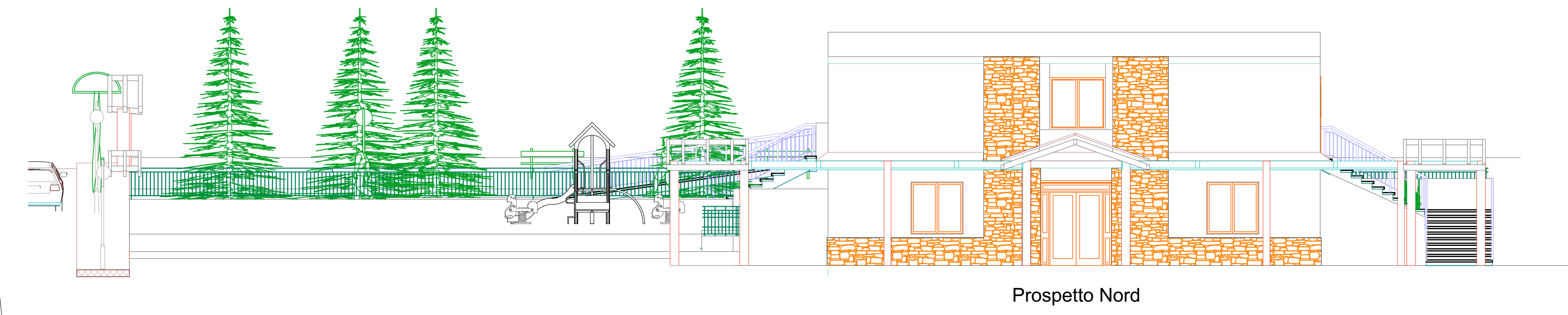
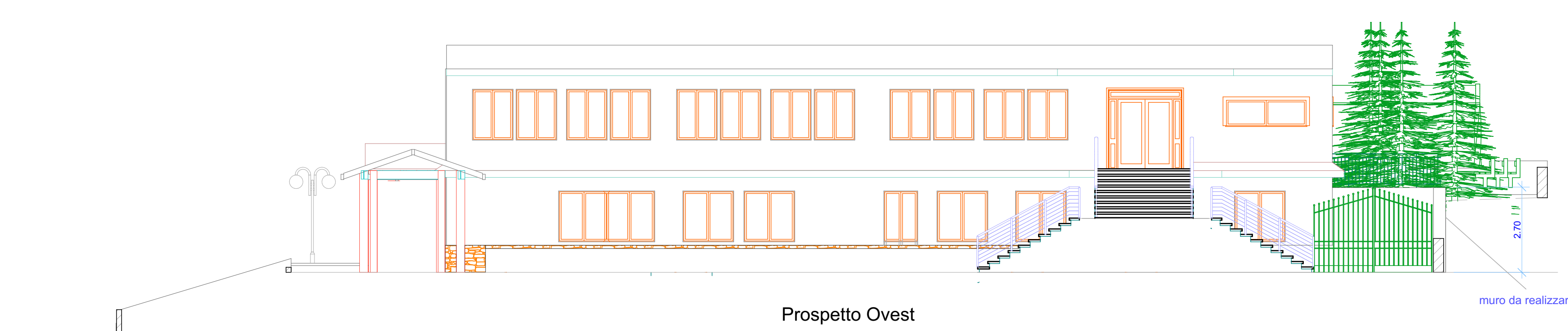
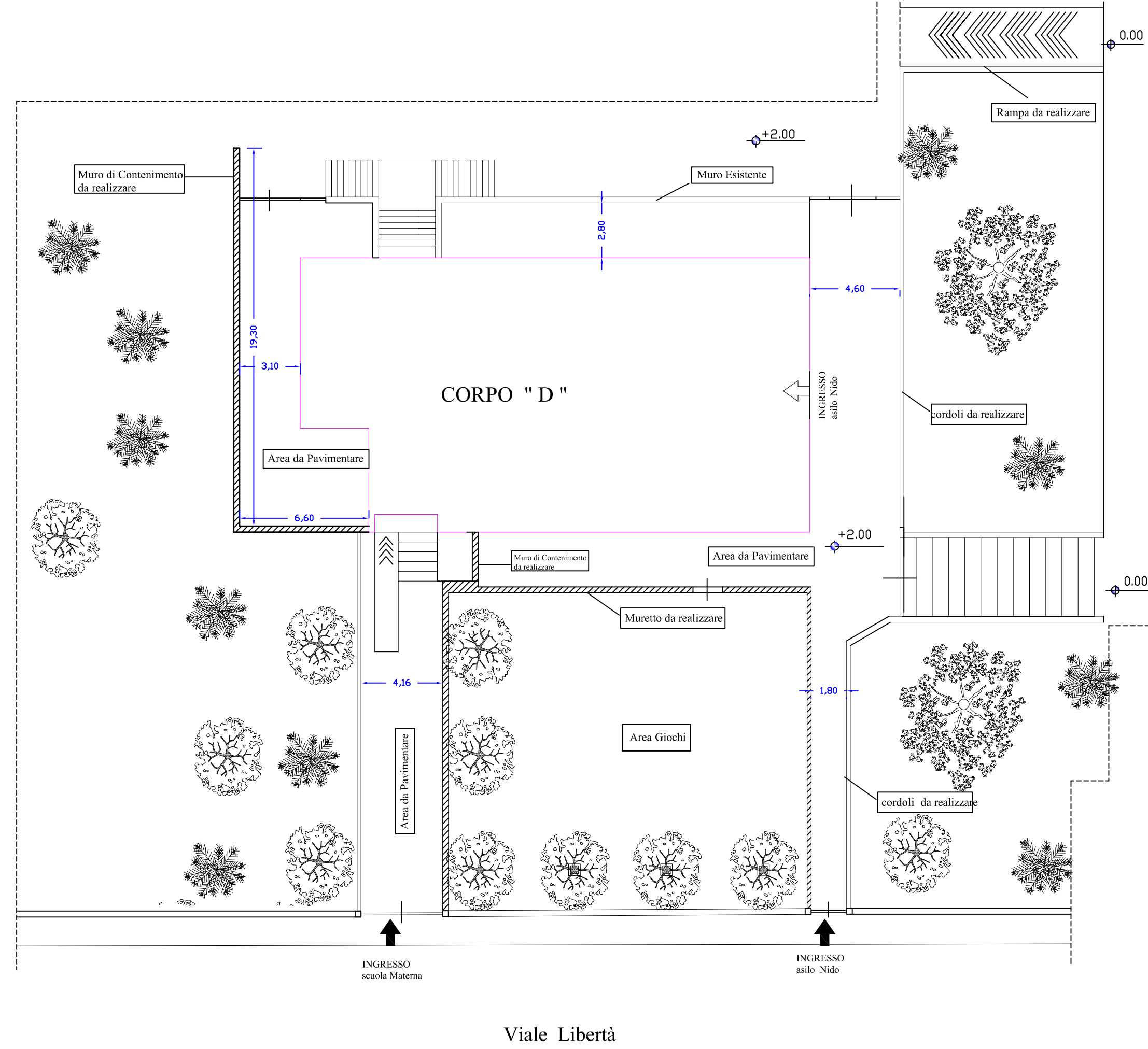


PLANIMETRIA GENERALE

Plesso G. Verga
 scala 1:500

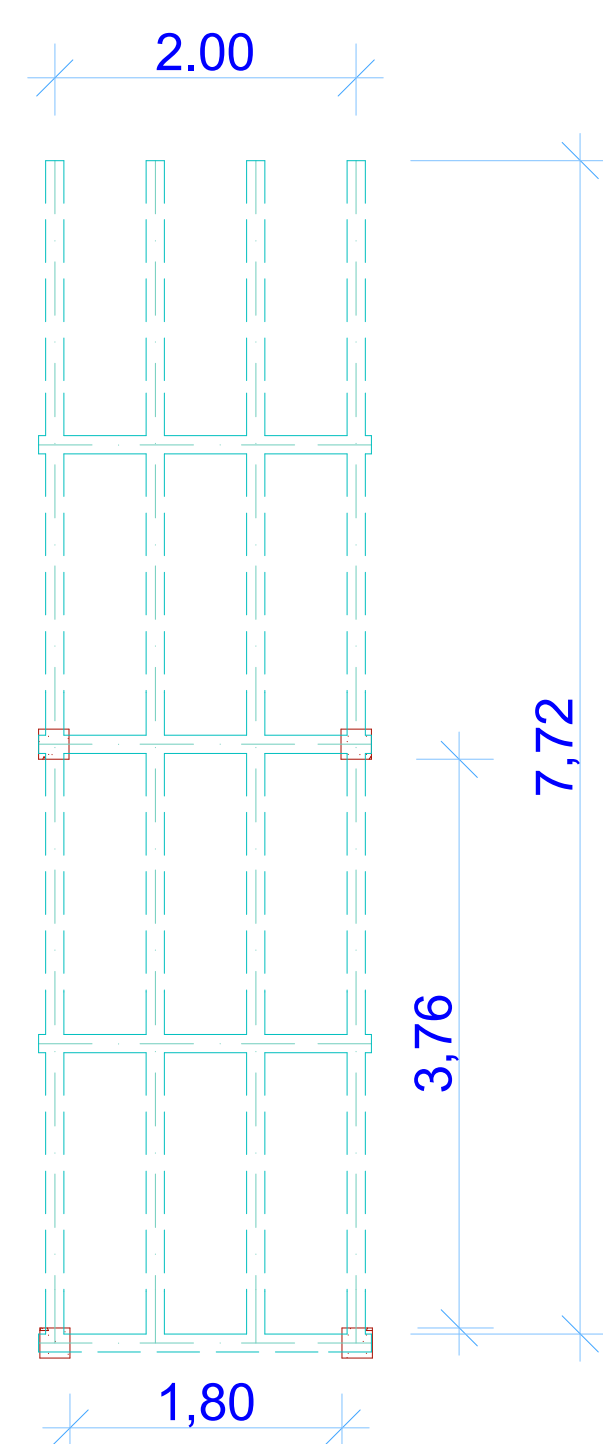


PLANIMETRIA AREA ESTERNA
 SCALA 1:200

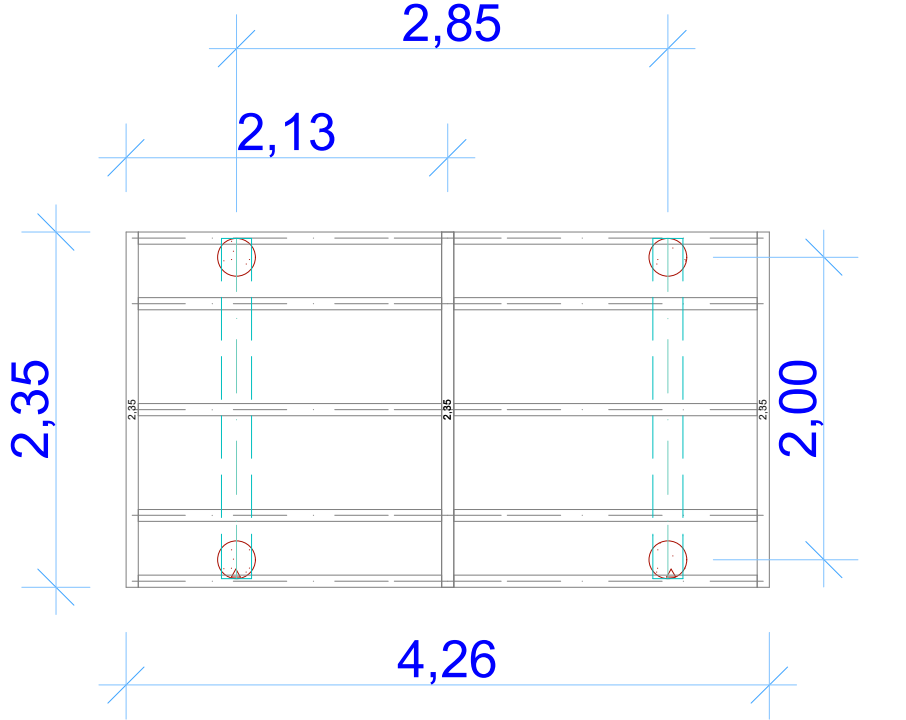


Prospetto pergolato
 Scala:1:100

PIANTA MODULO LONGITUDINALE
 Scala:1:50



PIANTA MODULO LATERALE
 Scala:1:50



PIANTA MODULO CENTRALE
 Scala:1:50

